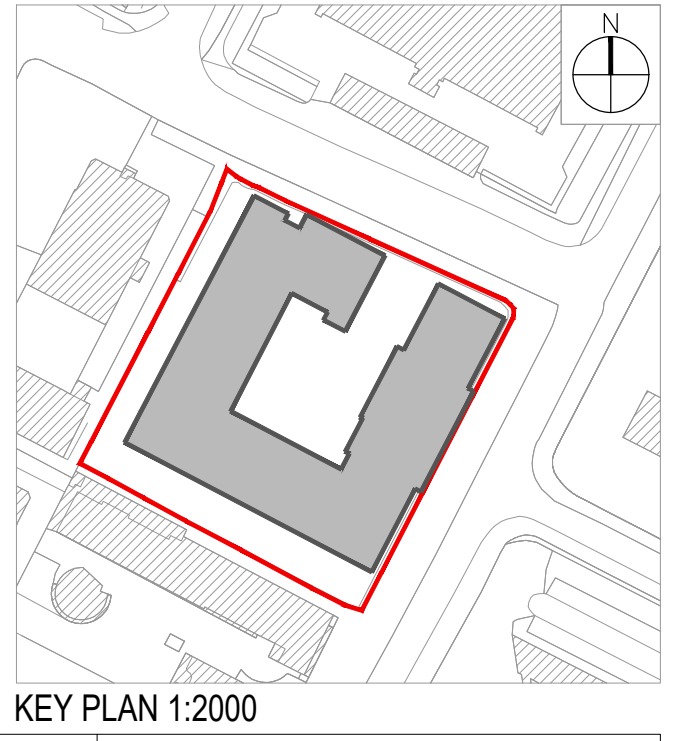


THIRD FLOOR
FINISHED FLOOR LEVEL - 95.975
SLAB LEVEL - 95.995
CEILING LEVEL - 98.610



- LEGEND**
- RESIDENTS AMENITIES
 - RESIDENTS AMENITIES (SPECIFIED HOURS FOR USE BY LOCAL COMMUNITY)
 - SHARED AMENITIES (FOR USE BY RESIDENTS AND LOCAL COMMUNITY)
 - STUDIO
 - 1 BED APARTMENT - 2 PERSON
 - 2 BED APARTMENT - 3 PERSON
 - 2 BED APARTMENT - 4 PERSON
 - 3 BED APARTMENT - 5 PERSON
 - SHARED RESIDENTIAL AMENITY ENTRANCES
 - RESIDENTIAL ENTRANCES
 - APPLICATION SITE BOUNDARY (RED LINE)
- REFER TO LANDSCAPE ARCHITECTS DRAWING FOR FURTHER DETAILS OF HARD AND SOFT LANDSCAPING AND BOUNDARY FINISHES

FLOOR	STUDIO	1 BED 2 P	2 BED 3P	2 BED 4P	3 BED 5P	TOTAL
1	3	32	-	11	-	46
2	2	33	-	10	2	47
3	2	33	-	10	2	47
4	2	27	2	12	2	45
5	2	27	2	12	2	45
6	3	28	-	10	-	41
7	11	21	2	7	-	41
8	9	16	-	4	-	29
9	2	15	-	3	-	20
10	2	15	-	3	-	20
11	-	7	-	1	-	8
12	-	7	-	1	-	8
13	-	7	1	-	-	8
14	-	7	1	-	-	8
15	3	4	1	-	-	8
16	1	6	1	-	-	8
TOTAL	41	285	10	84	8	428



Notes

- Copyright Reserved
- Work to listed dimensions only. Do not scale drawing
- The contractor is responsible for checking all levels and dimensions on site and shall refer all discrepancies to the Architect
- Where appropriate, for details of i.c. structure, or mechanical and electrical details, see Engineers drawings
- Proprietary items shall be fixed in strict accordance with manufacturers instructions.
- Sizes of proprietary items shall be checked with manufacturer.
- The contractor shall be responsible for the coordination of structure, finishes and services.

Issue Status

Progress	
Planning Application	
Fire Cert	
Disability Cert	
Tender	
Construction	
As Built	
Information Only	

No.	Date	Revision	Initials
PL1	JUNE 2020	PLANNING APPLICATION ISSUE	FF
PL2	JAN 2021	PLANNING APPLICATION ISSUE	ML

Project: Carmanhall Road SHD Atlas GP Ltd.

Drawing Title: Proposed Third Floor Plan

Drawing No: 6246-105

Scale: 1:200@A1 Rev: PL2 Drawn: ML Date: 05/03/20

6-7 HARcourt TERRACE, DUBLIN 2, IRELAND
T: +353 1 678 2400 F: +353 1 678 7396
www.bkd.ie

bkd architects
BURKE-KENNEDY DOYLE